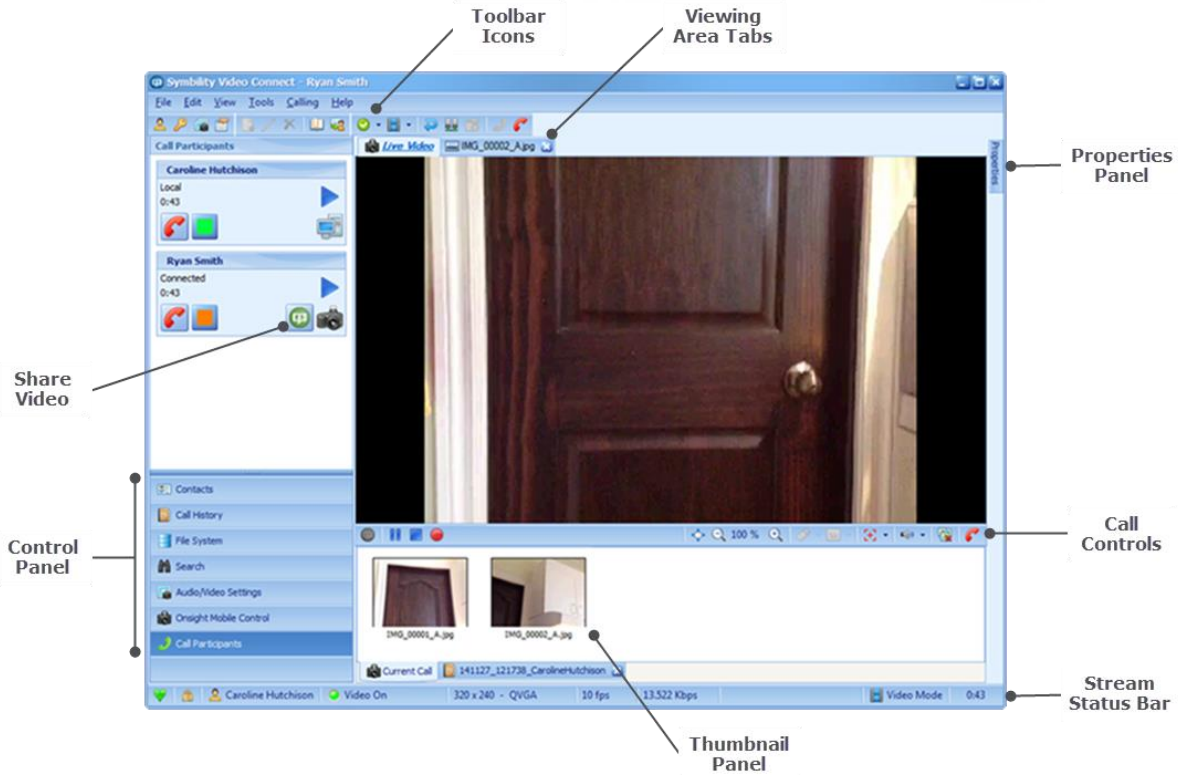
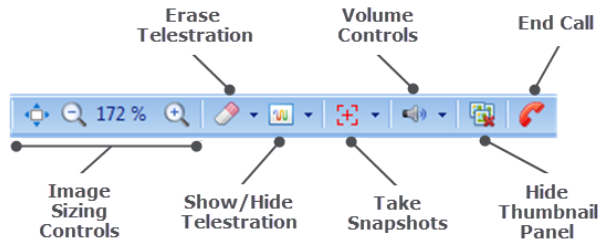


VIDEO COLLABORATION VIEWING AREA



CALL CONTROL BAR

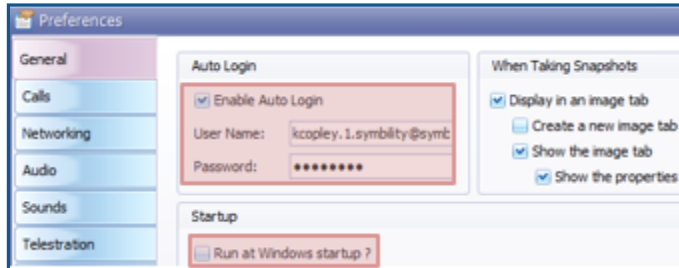


TOOLBAR ICONS FOR PC

Modify your personal profile (Ctrl+R)	Change your password (Ctrl+H)	Manage the media configurations (Ctrl+E)	Modify your program preferences (Ctrl+P)
Create a new user Create a new contact (Ctrl+N)	Modify selected user Modify selected contact (Ctrl+M)	Delete the selected contact Delete the selected user (Delete)	Search the global contacts database (Ctrl+G)
Invite a Guest (Ctrl+I) <small>This feature only appears if you are connected to the Video Connect Account Service.</small>	Set the calling status <small>*Does not apply to Symbility Video Connect</small>	Set the calling mode – select Video or Image Sharing	Test the bandwidth availability of the current call participants
Display the current connection status	Display the current playback properties	Call the selected contact	End the current call

SETTING PREFERENCES

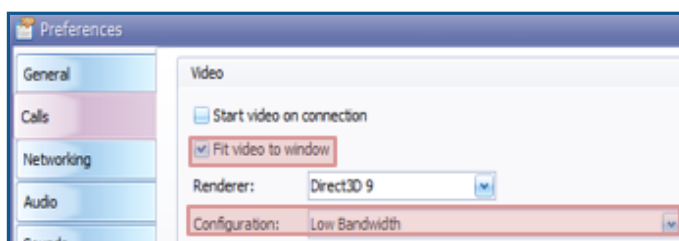
There are a few preferences we recommend setting to maximize the use and efficiency of Video Connect. To set preferences from the menu bar: **Edit > Preferences**



GENERAL PREFERENCES

Enable Auto Login saves time by saving your credentials and automatically logging you in.

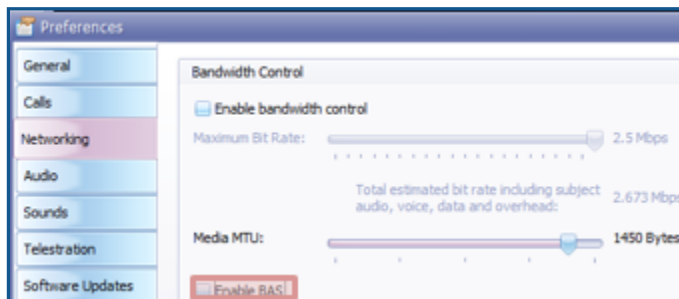
Run at Windows startup – This option will automatically launch Video Connect upon start up.



CALLS PREFERENCES

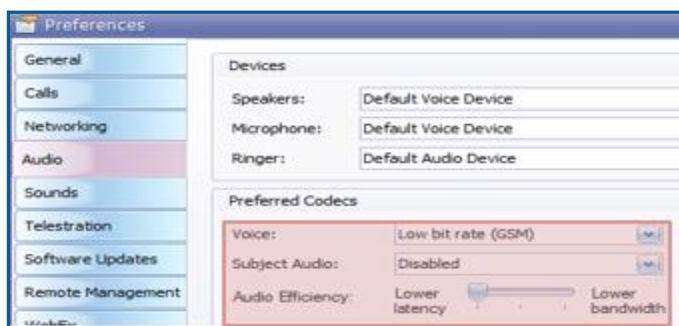
Fit video to window will maximize video display in viewing area.

Configuration should be set to low bandwidth to ensure a connection in all conditions. This can be changed if the connection is secure.



NETWORKING PREFERENCES

Enable BAS – This should be unchecked and disabled.



AUDIO PREFERENCES

Voice – Set to Low bit rate (GSM) this will consume little bandwidth to help performance.

Subject Audio – Set to Disabled.

Audio Efficiency – Set to Lower latency.